

Basic F&C Signals

(ask your Corner Captain if these are the signals to use)



Ambulance



Fire!



**I need
Point!**



Help!

Double Yellow

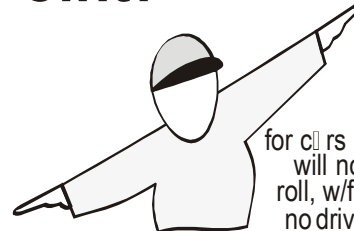


or Flat Tow

for cars that could be driven in, if still running



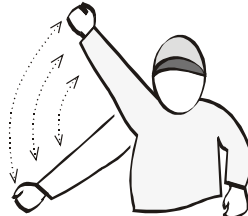
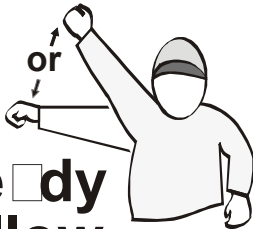
Wrecker



for cars that will not roll, w/flat, no driver...

Tilt Bed

Steady Yellow



...or...



Waving Yellow



**White
Flag**



**Black
Flag**



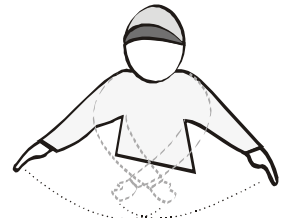
**Meat
Ball**



Lap



**Oil or
Debris**



**No Problem
("Safe" Sign)**



Drugging



**Belly
(Front)**



**Tail
(Rear)**



Smoking



Leaking



**Coolant
(drinking)**



**Fuel
(gas)**